

PRELIMINARY ISSUE
THIS PLAN ISSUED FOR
ADVANCE INFORMATION ONLY

NAD 83 CENTERLINE ANGLE POINTS (BAR & ENTRANCE)

PT	X	Y
C-1	5936273.49	2172157.43
C-2	5938147.59	2171508.43
C-3	5940265.09	2170773.43
C-4	5943553.39	2166602.43
C-5	5944545.29	2166122.43
C-6	5945376.39	2165957.23
C-7	5946085.69	2166728.23
C-8	5946885.99	2167508.33
C-9	5947166.09	2168359.43
C-10	5948049.39	2169917.43
C-11	5948433.89	2170455.43
C-12	5949233.79	2171119.43
C-13	5950417.39	2171891.43
C-14	5951329.29	2172555.43
C-15	5952138.39	2173530.43
C-16	5952999.89	2174705.43
C-17	5953711.89	2180611.43
C-18	5956236.79	2183159.43
C-19	5957823.09	2186379.43
C-20	5958152.59	2187513.43
C-21	5958681.79	2187878.43
C-22	5959281.79	2188078.43
C-23	5959581.79	2189078.43

NAD 83 CHANNEL ANGLE POINTS (HUMBOLDT BAY BAR & ENTRANCE)

PT	X	Y	PT	X	Y
1	5936596.69	2173163.63	24	5959081.79	2187578.43
2	5938385.39	2172268.83	25	5958421.69	2187381.23
3	5940404.09	2171258.93	26	5958007.99	2186903.83
4	5943666.09	2169944.43	27	5956425.99	2183993.63
5	5944727.49	2166468.93	28	5956165.59	2181942.63
6	5945239.99	2166690.33	29	5956346.69	2181424.83
7	5945752.59	2166911.73	30	5956566.99	2180353.43
8	5946454.09	2167311.33	31	5956165.59	2174504.63
9	5946953.59	2168479.53	32	5956200.39	2173413.53
10	5947931.59	2170042.13	33	5956156.29	2172459.53
11	5949193.09	2170679.33	34	5956252.69	2171724.13
12	5949124.59	2171287.03	35	5949343.09	2170952.03
13	5950308.09	2172059.13	36	5948674.79	2170232.13
14	5951141.79	2172853.23	37	5948301.49	2169794.33
15	5951976.39	2173548.23	38	5947386.59	2169234.23
16	5952816.79	2174808.43	39	5946907.49	2167381.23
17	5955484.79	2180520.43	40	5946431.39	2166537.23
18	5956047.79	2183225.33	41	5945672.89	2165162.43
19	5957823.09	2186379.43	42	5945354.09	2162524.63
20	5958152.59	2187513.43	43	5944363.09	2162776.33
21	5958681.79	2187878.43	44	5943441.39	2162611.63
22	5959281.79	2188078.43	45	5943125.19	2172287.83
23	5959581.79	2189078.43	46	5937908.79	2170746.43
			47	5936950.29	2171151.43

US Army Corps of Engineers
San Francisco District
450 Golden Gate Ave
San Francisco, CA 94102

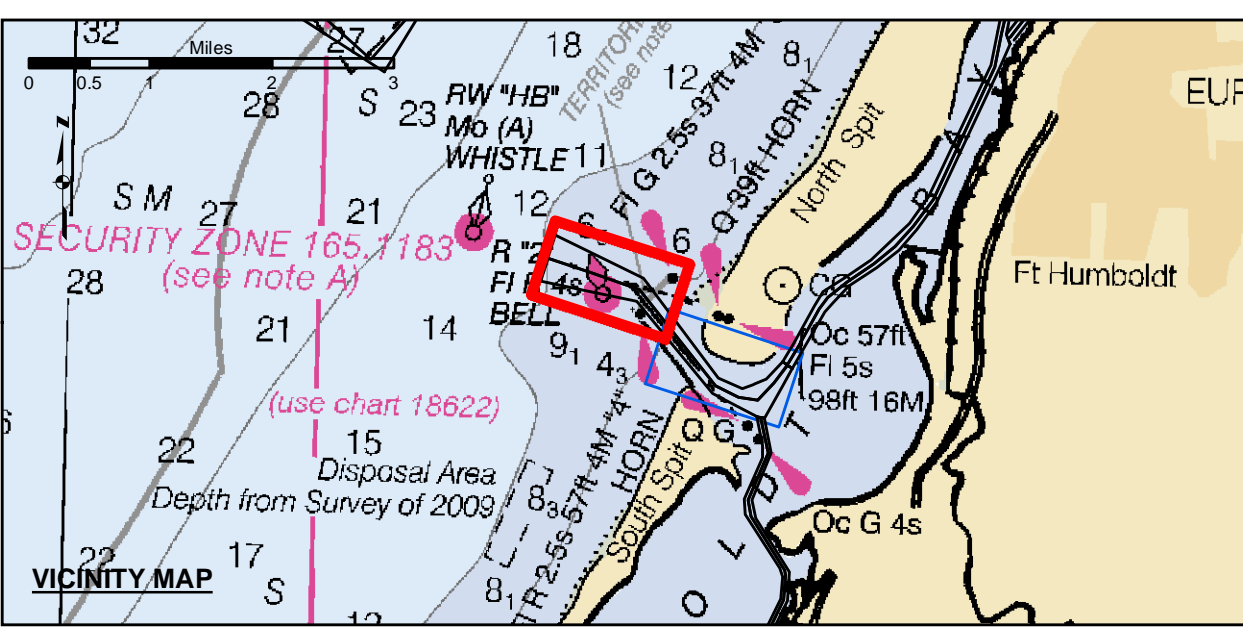
DISCLAIMER
The United States Government furnishes this information as a public service. It is not intended to be used for any purpose other than that for which it was prepared. The user assumes all liability for any use of this information. The United States Government makes no warranty, expressed or implied, concerning the accuracy, completeness, or reliability of the information. The user is responsible for the results of any use of this information. The user agrees to hold the United States Government harmless from any and all claims, damages, or liabilities, including reasonable attorneys' fees, arising from the use of this information. The user agrees to indemnify and hold the United States Government harmless from any and all claims, damages, or liabilities, including reasonable attorneys' fees, arising from the use of this information. The user agrees to hold the United States Government harmless from any and all claims, damages, or liabilities, including reasonable attorneys' fees, arising from the use of this information. The user agrees to hold the United States Government harmless from any and all claims, damages, or liabilities, including reasonable attorneys' fees, arising from the use of this information.

PREPARED UNDER THE DIRECTION OF
LT COLONEL C.E. DISTRICT ENGINEER

Surveyed By:	KEVIN P. ARNETT	Chart Date:	Mar 28, 2023
Plotted By:	PDT	Designed by:	PDT
Checked By:	PDT	Drawn by:	PDT

CALIFORNIA
**HUMBOLDT BAY
BAR & ENTRANCE CHANNEL
CONDITION SURVEY**
23-24 MARCH 2023

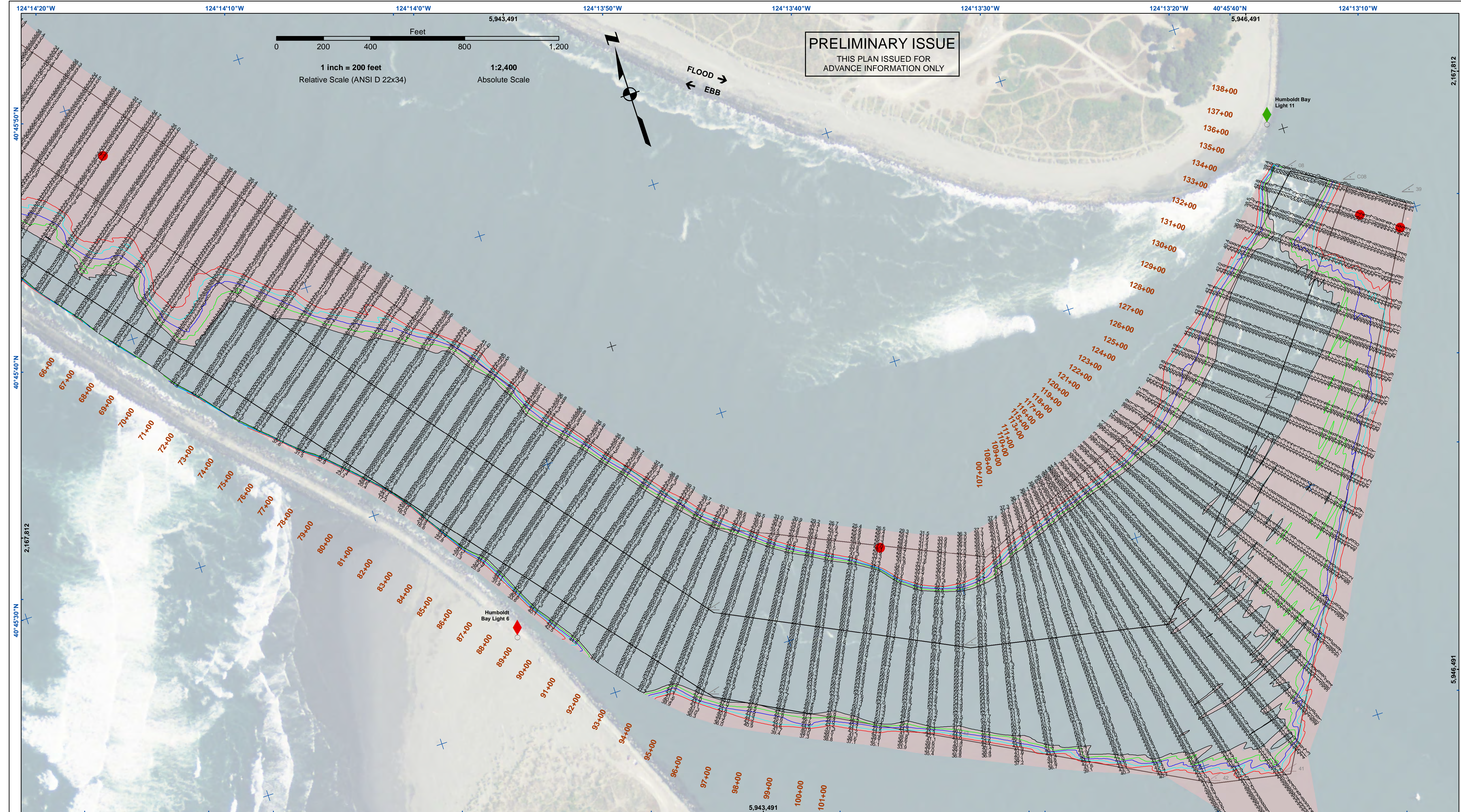
**Sheet
Number
1 of 2**



- Federal Navigation Channel
- Shoaling Area
- Placement Area
- Anchorage Area
- Wreck Area
- Submerged Wreck
- Zone_I_Angle_Points
- Beacon, General
- Obstruction Point
- Navigation Buoy
- Navigation Buoy
- Shoalest Sounding*
- Contours**
- 48
- 47
- 46
- 45
- 44

NOTES:
DRAWINGS NOT TO BE USED AS NAVIGATION. ONLY CHANNEL CONDITION AT DATE OF SURVEY. THE LOCATION OF ALL NAVIGATION AIDS ARE BASED ON INFORMATION PROVIDED BY THE U.S. COAST GUARD. BUOY LOCATION REPRESENT THE POSITION OF THE SINKER ONLY.
SURVEYED BY THE CORPS OF ENGINEERS.
SOUNDINGS WERE TAKEN BY FATHOMETER AND ARE SHOWN TO THE NEAREST TENTHS OF A FOOT.
SOUNDINGS ARE BASED ON THE DATUM OF MEAN LOWER LOW WATER AT THE LOCALITY.
PLANE GRID AND COORDINATES ARE BASED ON THE STATE OF CALIFORNIA COORDINATE SYSTEM, LAMBERT CONFORMAL PROJECTION, ZONE 11 NAD 83, CALIFORNIA, AS DESCRIBED IN SPECIAL PUBLICATION NO. 235, PUBLISHED BY THE NATIONAL OCEAN SURVEY.
PROJECT DEPTHS ARE AS FOLLOWS:
BAR & ENTRANCE CHANNEL = 48 FEET
NORTH BAY, SAMOATO MILE 5.0 & = 38 FEET
EUREKA CHANNEL, FIELDS LANDING CHANNEL & MILE 5.0 TO "N" STREET = 26 FEET

1:00 INDICATES THE NUMBER AND BEGINNING OF A LINE OF SOUNDINGS.
SOUNDINGS ARE BASED ON TIDE GAUGES REFERENCED TO U.S.C. & G.S.
Vertical and Horizontal Control:
NOAA Station: 941 8767 - North Spit, CA
Benchmark:
NO 11 1340 (PID: LV0359)
MLW Elev: 4.251m
Title:
RTK GPS, using GEOID12a and VDATUM
RTK elevations calibrated at 10.0ft nail at Coast Guard Station Humboldt Bay
Position:
RTK Positions



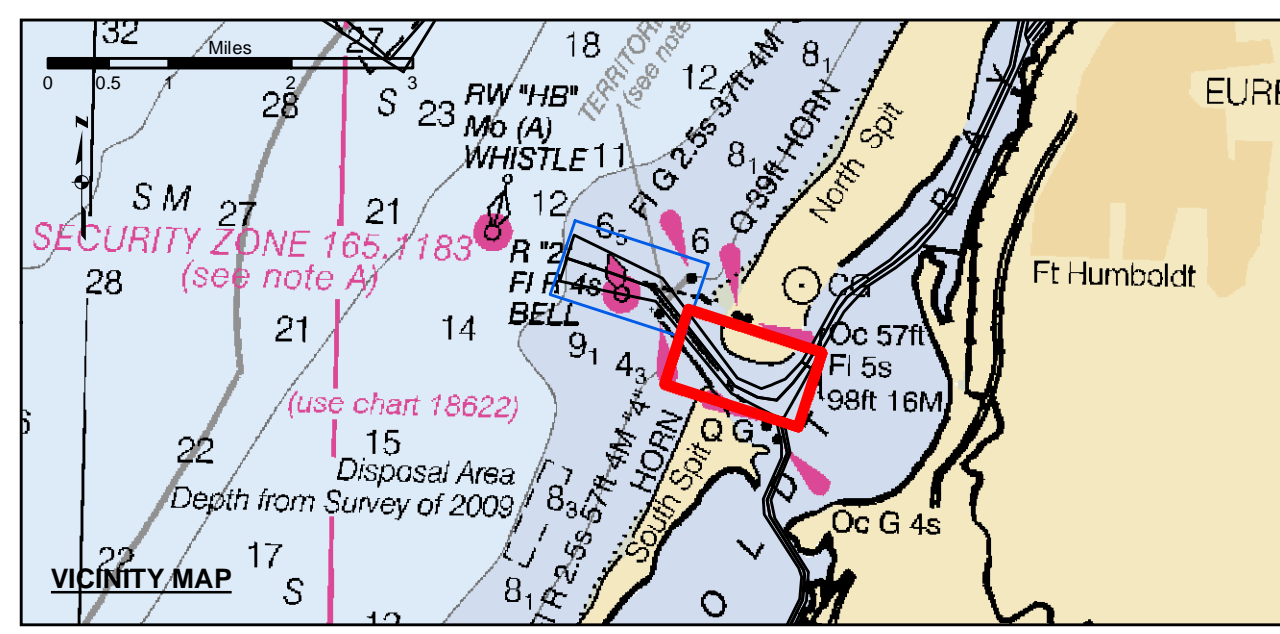
PRELIMINARY ISSUE
THIS PLAN ISSUED FOR
ADVANCE INFORMATION ONLY

0 200 400 800 1,200
Feet
1 inch = 200 feet
Relative Scale (ANSI D 22x34)
1:2,400
Absolute Scale

US Army Corps of Engineers
San Francisco District
450 Golden Gate Ave
San Francisco, CA 94102

DISCLAIMER
The United States Government furnishes this information as a public service. It is not intended to be used for any purpose other than that for which it was prepared. The user is responsible for the results of any application of the data for other than the intended purpose. The user is responsible for the results of any application of the data for other than the intended purpose. The user is responsible for the results of any application of the data for other than the intended purpose. The user is responsible for the results of any application of the data for other than the intended purpose.

Chart Date:	Mar 28, 2023
Surveyed By:	KEVIN P. ARNETT
Plotted By:	PDT
Checked By:	PDT
Drawn By:	PDT



Federal Navigation Channel	Beacon, General	Contours
Shoaling Area	Navigation Buoy	-48
Placement Area	Navigation Buoy	-47
Anchorage Area	Shoalest Sounding*	-46
Wreck Area		-45
Submerged Wreck		-44
Zone_I_Angle_Points		

NOTES:
DRAWINGS NOT TO BE USED AS NAVIGATION. ONLY CHANNEL CONDITION AT DATE OF SURVEY. THE LOCATION OF ALL NAVIGATION AIDS ARE BASED ON INFORMATION PROVIDED BY THE U.S. COAST GUARD. BUOY LOCATION REPRESENT THE POSITION OF THE SINKER ONLY.
SURVEYED BY THE CORPS OF ENGINEERS.
SOUNDINGS WERE TAKEN BY FATHOMETER AND ARE SHOWN TO THE NEAREST TENTHS OF A FOOT.
SOUNDINGS ARE BASED ON THE DATUM OF MEAN LOWER LOW WATER AT THE LOCALITY.
PLANE GRID AND COORDINATES ARE BASED ON THE STATE OF CALIFORNIA COORDINATE SYSTEM, LAMBERT CONFORMAL PROJECTION, ZONE 17NAD 83, CALIFORNIA, AS DESCRIBED IN SPECIAL PUBLICATION NO. 235, PUBLISHED BY THE NATIONAL OCEAN SURVEY.
PROJECT DEPTHS ARE AS FOLLOWS:
BAR & ENTRANCE CHANNEL = 48 FEET
NORTH BAY, SAMOATO MILE 5.0 & = 38 FEET
EUREKA CHANNEL, FIELDS LANDING CHANNEL & MILE 5.0 TO "N" STREET = 26 FEET

1:00 INDICATES THE NUMBER AND BEGINNING OF A LINE OF SOUNDINGS.
SOUNDINGS ARE BASED ON TIDE GAUGES REFERENCED TO U.S.C. & G.S.
Vertical and Horizontal Control:
NOAA Station: 941 8767 - North Spit, CA
Benchmark:
NO 11 1340 (PID: LV0359)
MLLW Elev: 4.251m
Tides:
RTK GPS, using GEOID12a and VDATUM
RTK elevations calibrated at 10.0ft nail at Coast Guard Station Humboldt Bay
Position:
RTK Positions

CALIFORNIA
HUMBOLDT COUNTY
HUMBOLDT BAY
BAR & ENTRANCE CHANNEL
CONDITION SURVEY
23-24 MARCH 2023

Sheet Number
2 of 2